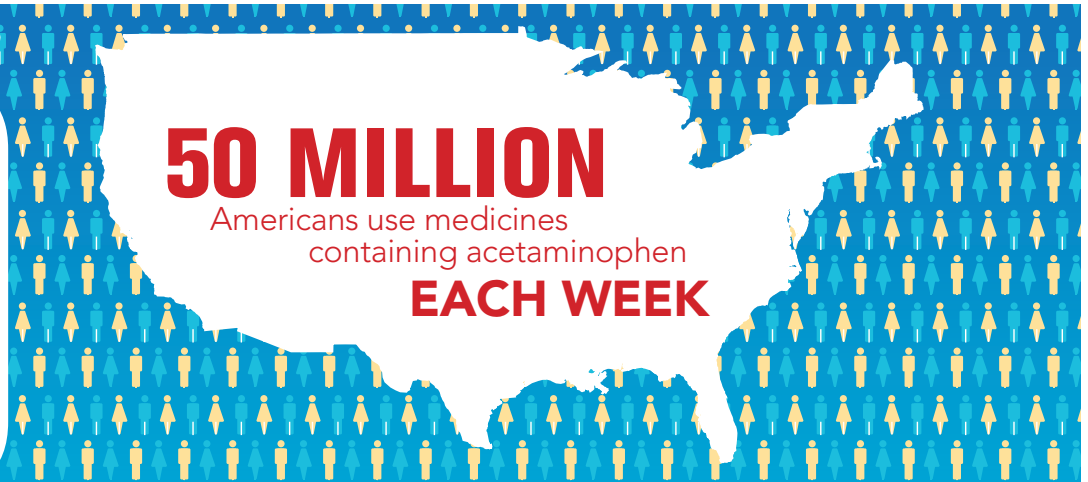


# ACETAMINOPHEN

THE MOST COMMON DRUG INGREDIENT IN AMERICA



## USING IT

Acetaminophen is a **safe and effective pain reliever and fever reducer** when used as directed. More than 95% of the time, it is taken according to directions on the medicine label.<sup>1</sup>



## AVOIDING OVERDOSE

### EXCEEDING THE MAXIMUM DAILY DOSE



of 4,000 mg is  
an overdose  
and can lead  
to liver damage<sup>2</sup>

**OF THOSE  
WHO  
EXCEED  
4,000 MG  
IN 1 DAY,  
MOST DO  
SO BY<sup>3</sup>**



Taking the next  
dose too soon



Using multiple  
products containing  
acetaminophen



Taking too much  
at one time



## PROMOTING SAFE USE & EDUCATING CONSUMERS

### EDUCATION IS WORKING

More consumers are aware that  
"exceeding the recommended  
dose can lead to liver damage"<sup>4</sup>

**78%**  
2010

**87%**  
2013

### FOLLOW SAFE USE STEPS

1. Always read & follow the medicine label
2. Know if your medicines contain acetaminophen
3. Never take two acetaminophen-containing medicines at the same time
4. Ask your healthcare professional or pharmacist if you have questions

1. <http://www.ncbi.nlm.nih.gov/pubmed/23001694>

2. <http://onlinelibrary.wiley.com/doi/10.1002/hep.20948/pdf>

3. "Acetaminophen Use Patterns" Presentation. [https://www.pharmacoepi.org/meetings/28ICPE/presentations/aj\\_oral\\_presentations\\_key.cfm](https://www.pharmacoepi.org/meetings/28ICPE/presentations/aj_oral_presentations_key.cfm)

4. <http://www.chpa.org/Templates/PressRelease.aspx?id=2717>